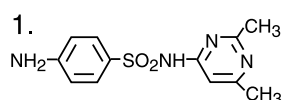
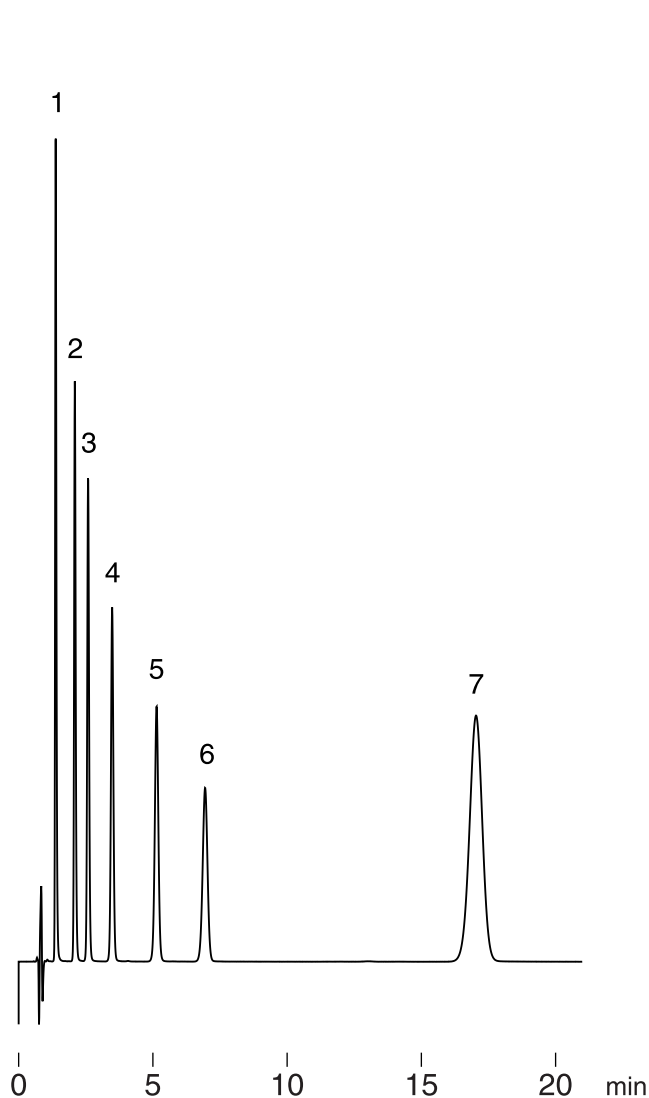
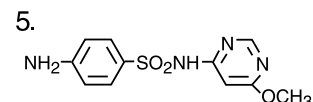


サルファ剤
Sulfonamides 磺胺药物

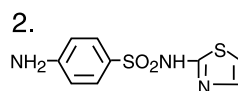
J010321F



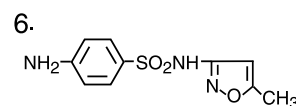
Sulfisomidine
磺胺索嘧啶



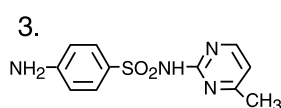
Sulfamonomethoxine
磺胺间甲氧嘧啶



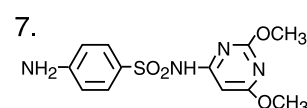
Sulfathiazole
磺胺噻唑



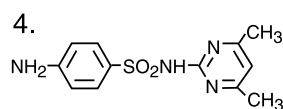
Sulfamethoxazole
磺胺甲噁唑



Sulfamerazine
磺胺甲嘧啶



Sulfadimethoxine
磺胺地索辛



Sulfadimidine
磺胺二甲嘧啶

Column : Hydrosphere C18 (3 μ m, 12nm)
50 \times 4.6 mm I.D.
Eluent : 10mM CH₃COOH - CH₃COONH₄ (pH 4.6) / acetonitrile
(85/15)
Flow rate : 1.0 mL/min
Temperature : 37 $^{\circ}$ C
Detection : UV at 275 nm, 0.16 AUFS
Injection : 10 μ L (0.01~0.04 mg/mL)