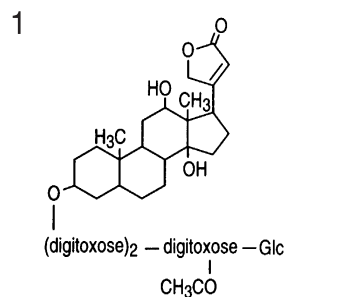
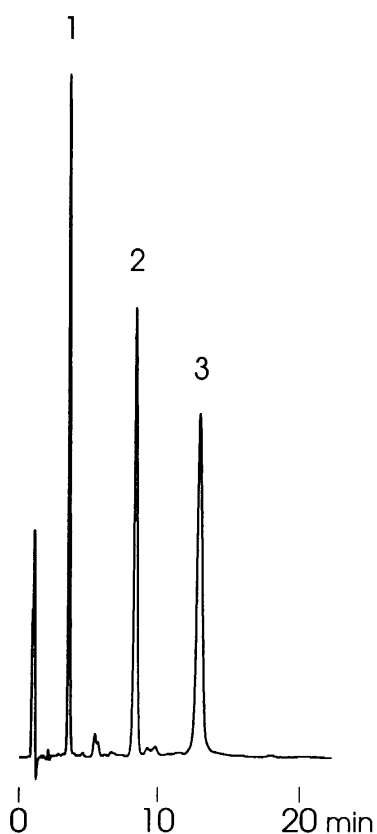


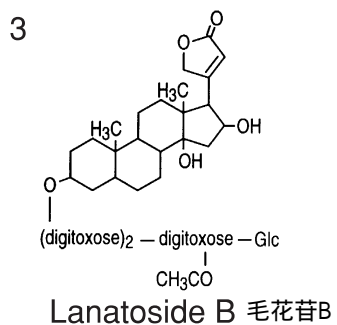
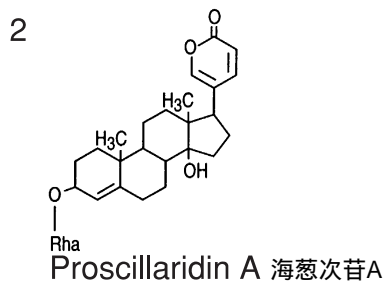
強心配糖体

Cardiac glycosides 强心苷

S961129G



Lanatoside C 毛花昔c



Column : YMC-Pack Pro C18 (5 μm, 12nm)
75 × 4.6 mm I.D.
Eluent : acetonitrile/water (30/70)
Flow rate : 1.0 mL/min
Temperature : 37 °C
Detection : UV at 220 nm, 0.13 AUFS
Injection : 8 μL (0.1~0.2 mg/mL)